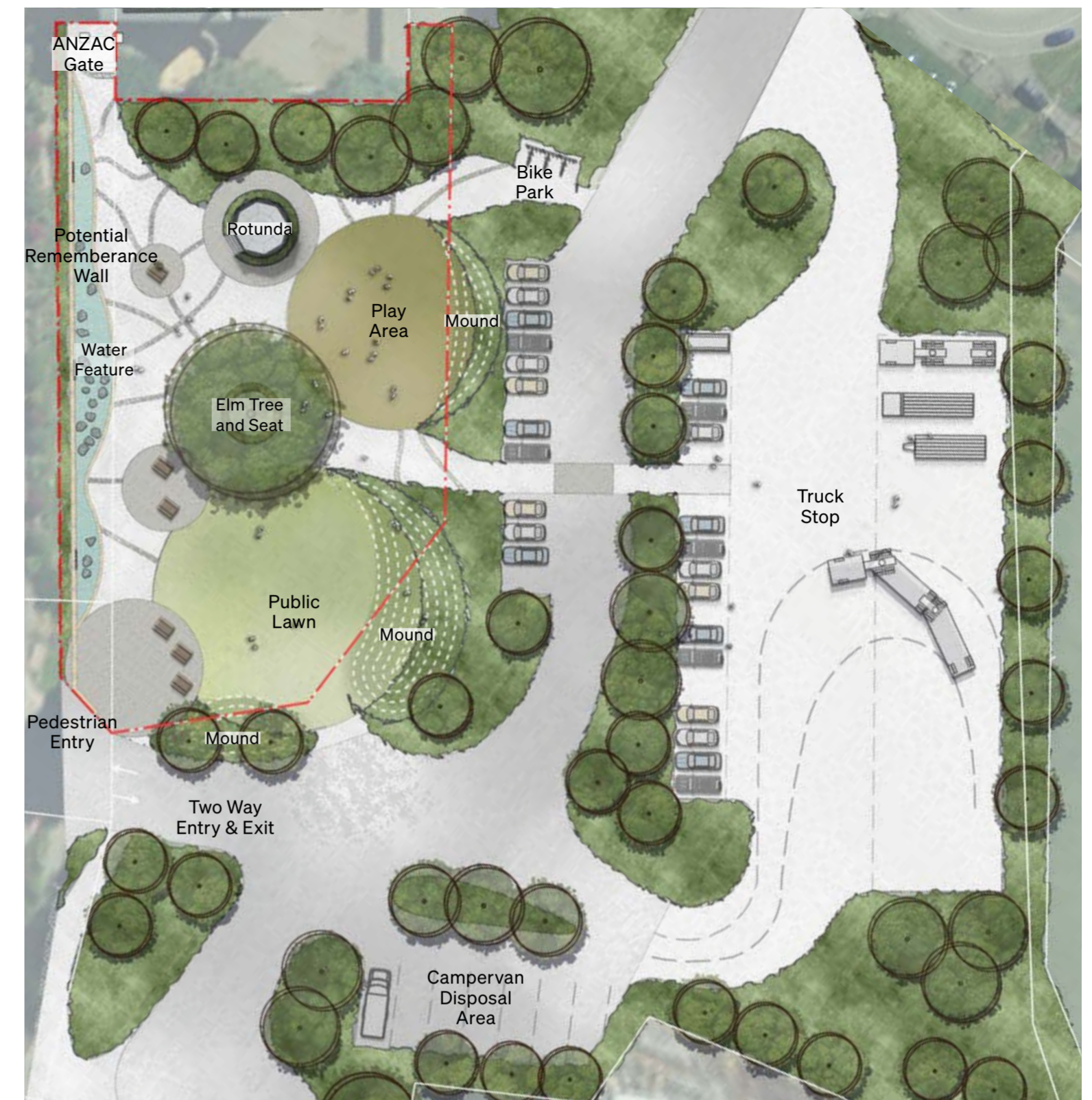
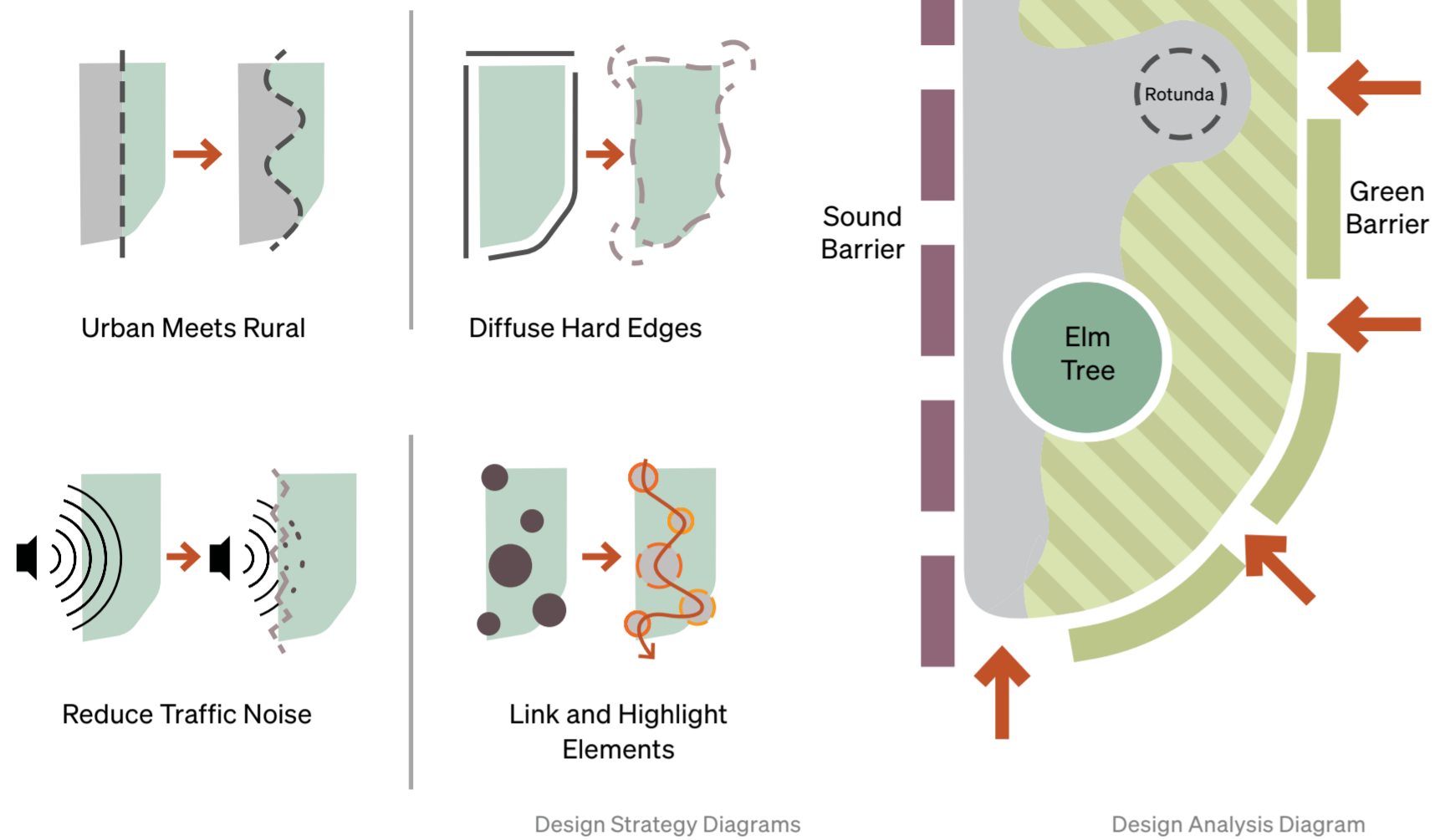


ANZAC OVAL

Design Strategy 1: Remembrance Wall

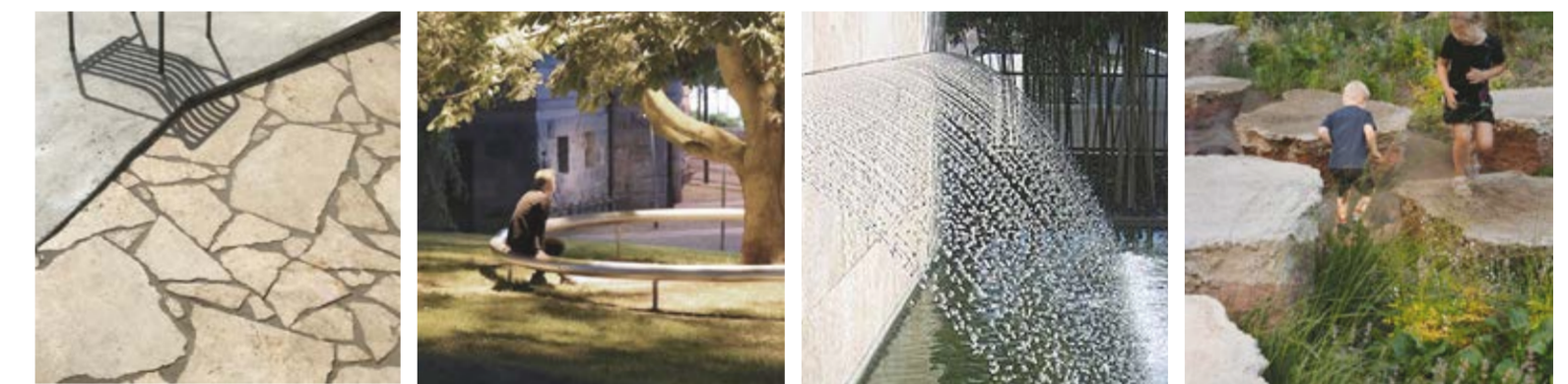
With more access to sunlight and upgraded park space ANZAC Oval has the potential to be the vibrant urban Park in the centre of Winton.



0m 5m 10m North
ANZAC Oval Zoomed-in Plan



0m 10m 20m North
ANZAC Oval Plan



Material Palette Inspirational Imagery

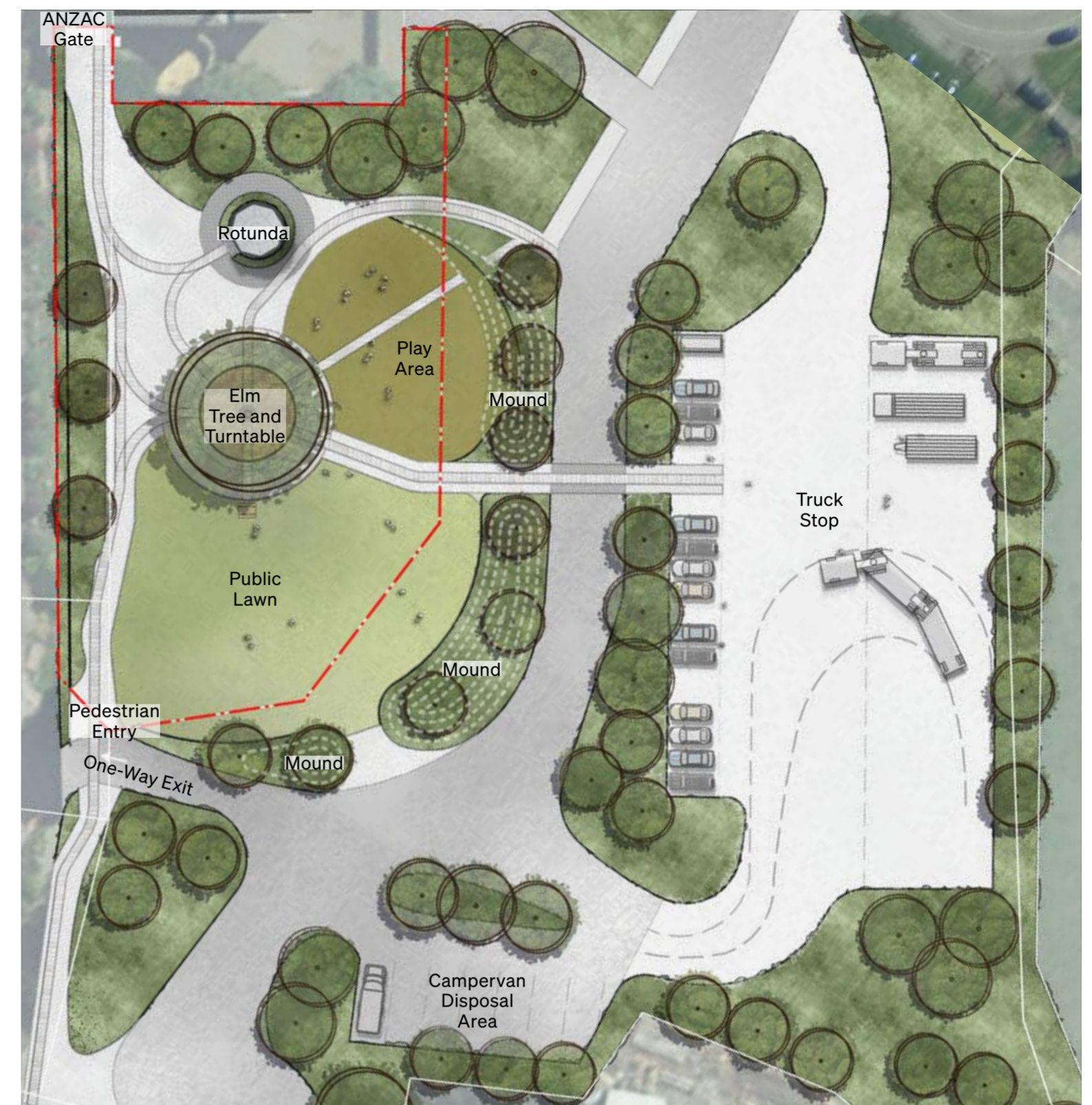
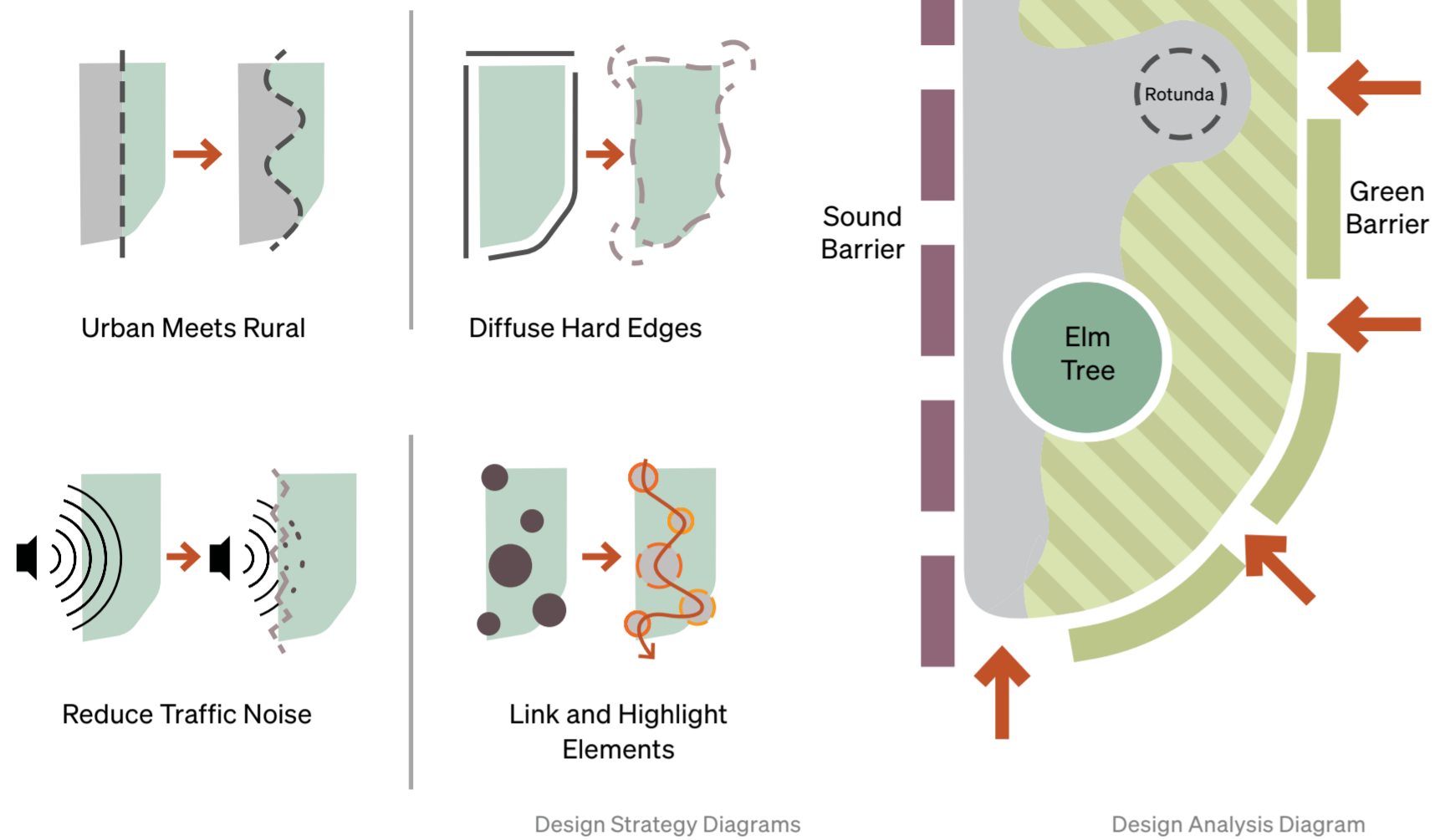


ANZAC Design Visualization - Looking Towards Remembrance Wall

ANZAC OVAL

Design Strategy 2: Winton Station

With more access to sunlight and upgraded park space ANZAC Oval has the potential to be the vibrant urban Park in the centre of Winton.



0m 5m 10m North
ANZAC Oval Zoomed-in Plan



0m 10m 20m North
ANZAC Oval Plan



Material Palette Inspirational Imagery

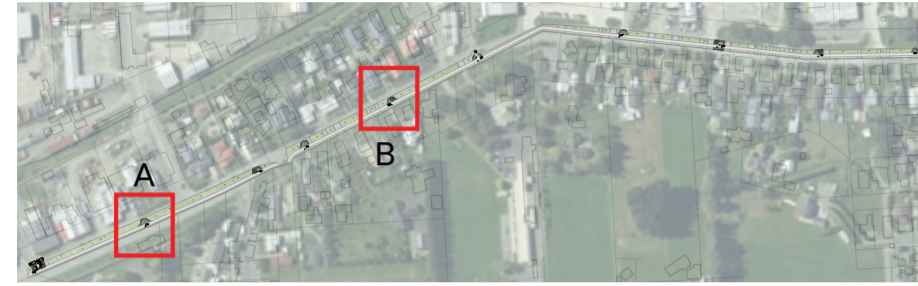


ANZAC Design Visualization-Looking Towards Planting

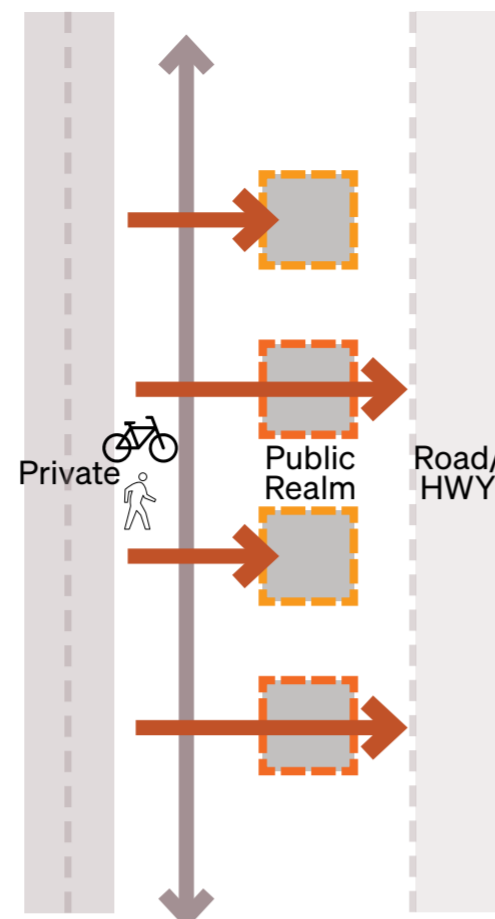
Great North Road

Design Strategy 1: Urban Grid

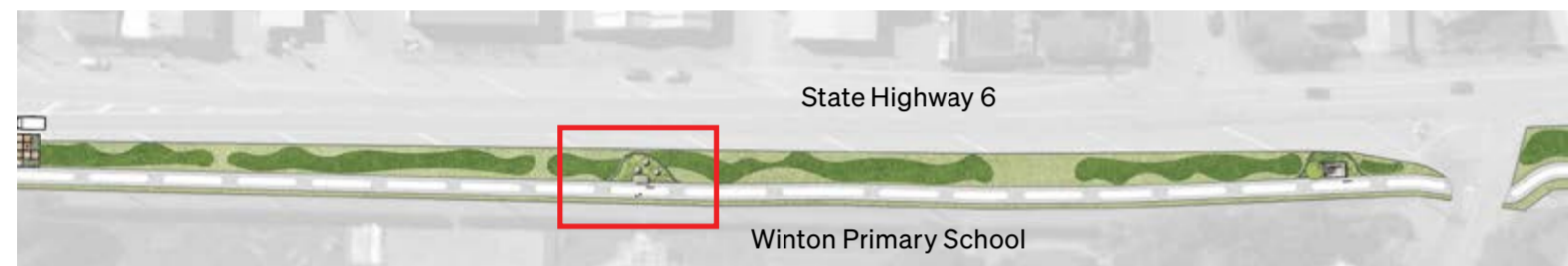
The Urban Grid proposal focuses on improving safety and access along Great North Road in a linear mode with key nodes created at junctions and points to provide better connections and places for users to pause and take a break from the journey.



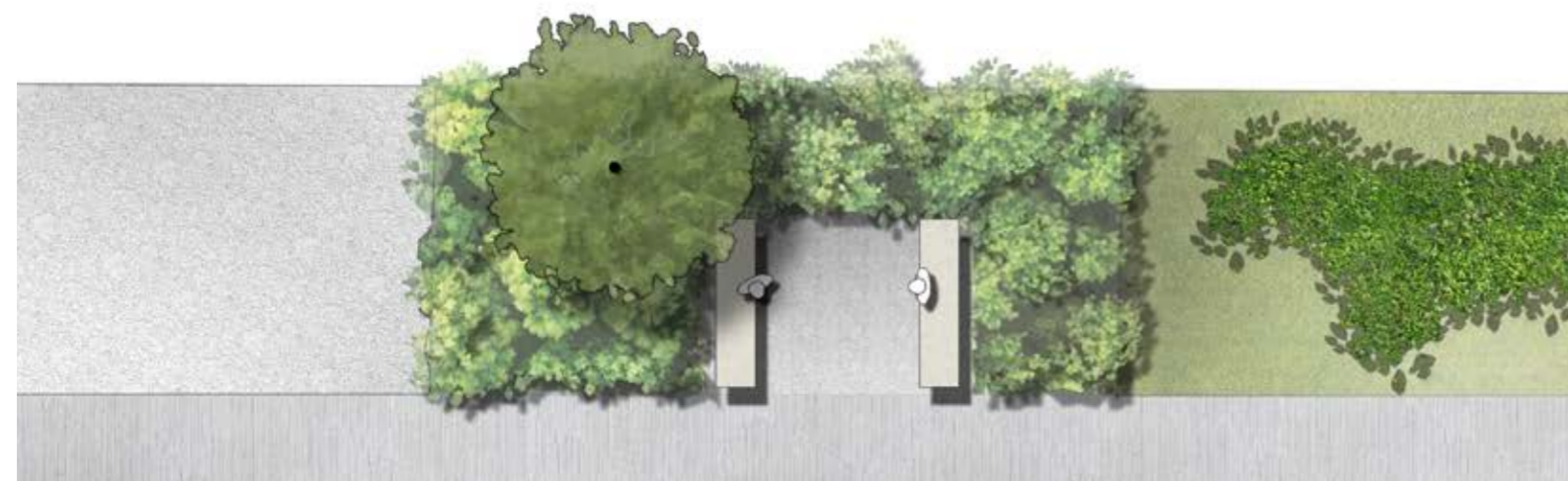
Great North Road Key Plan



Seating Area Sample Plan A



Seating Area Sample Plan A



Seating Area Sample Plan B

Food Truck Area

Food brings people together. The design creates a common place by building on the existing quality of food trucks parking on the verge near Clyde Street. This is a formally informal space for people to gather and enjoy some food in the public realm.

A mixture of high amenity planting and strong monolithic elements creates important nodes for users on the roadside as they make their way to and from town.



Food Truck Area Context



Food Truck Area Seating Plan



Material Palette Inspirational Imagery



Food Truck Area Design Visualization

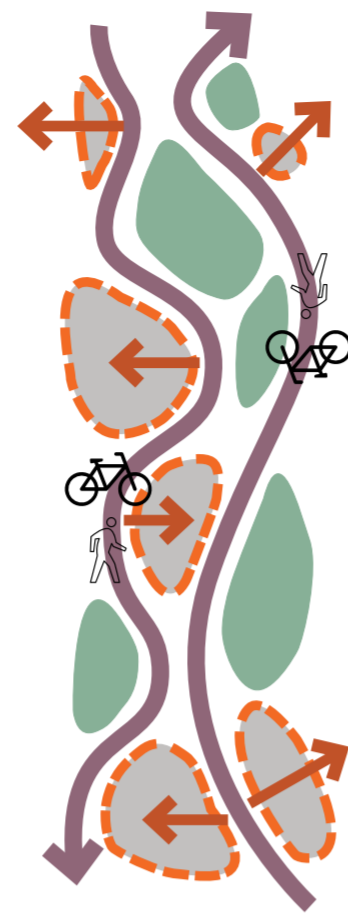
Great North Road

Design Strategy 2: Braided River

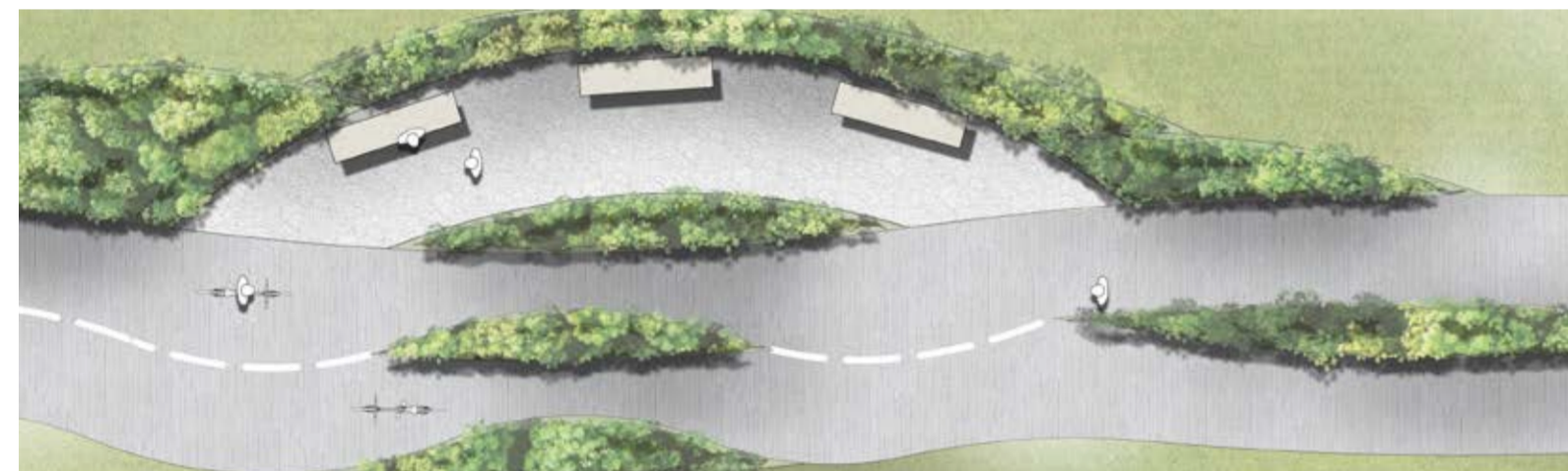
The Braided River proposal focuses on story telling. Creating an interesting shared path that tells the narrative of The Oreti Rivers journey through the landscape. Breakout spaces and planting are integrated to highlight the deltas of the river and provide spaces to users to pause, meet and relax on the pathway.



Great North Road Key Plan



Seating Area Sample Plan A



Seating Area Sample Plan A



Seating Area Sample Plan B

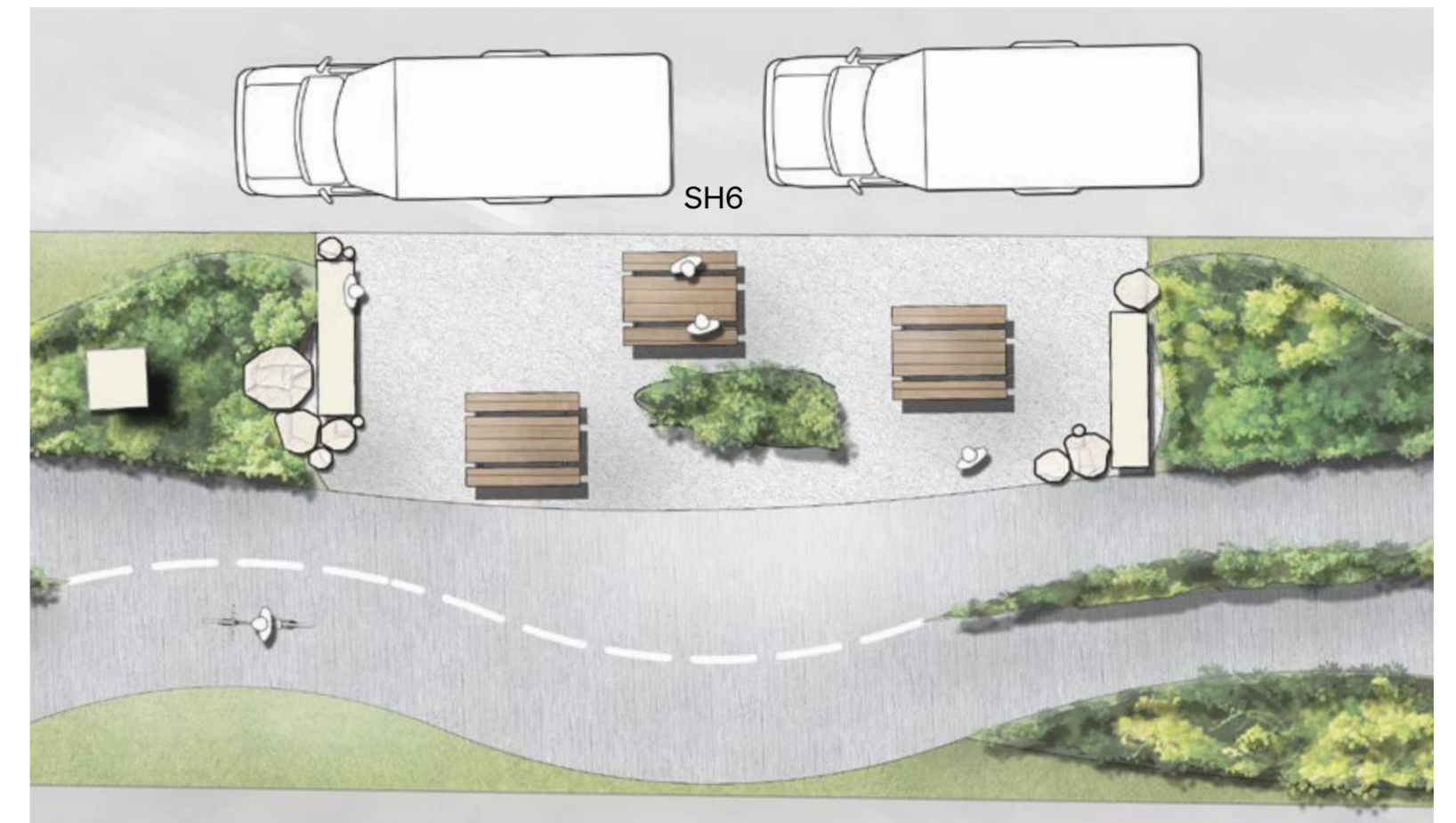
Food Truck Area

Food brings people together. The design creates a common place by building on the existing quality of food trucks parking on the verge near Clyde Street. This is a formally informal space for people to gather and enjoy some food in the public realm.

A mixture of high amenity planting and strong monolithic elements creates important nodes for users on the roadside as they make their way to and from town.



Food Truck Area Context



Food Truck Area Seating Plan



Material Palette Inspirational Imagery



Food Truck Area Design Visualization